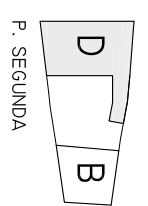
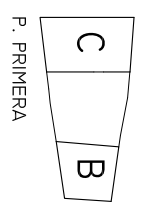
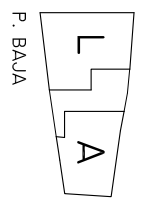
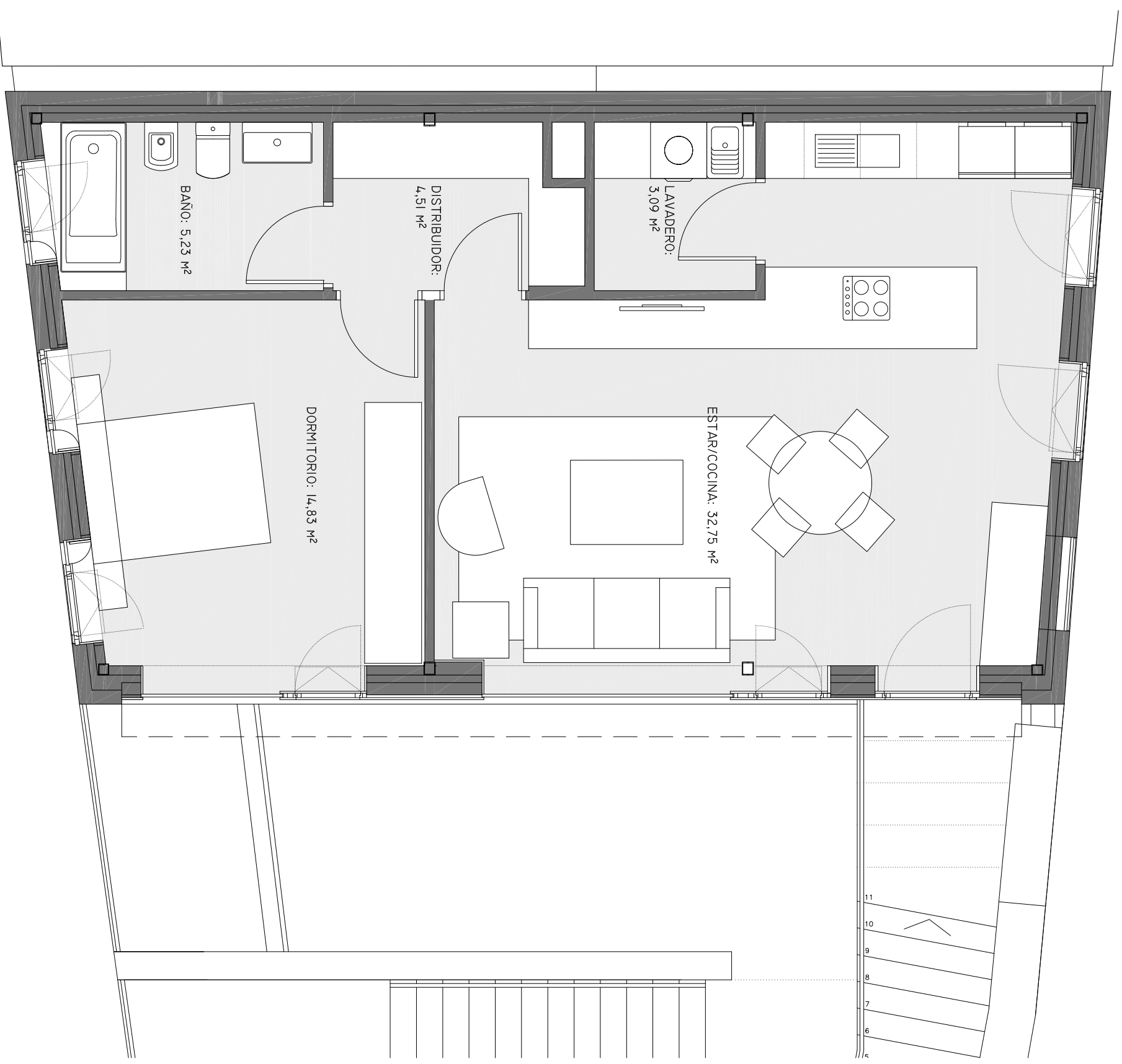


CUADRO DE SUPERFICIES ÚTILES

ESTAR/COMEDOR	32,75 m <sup>2</sup>
LAVADERO	3,09 m <sup>2</sup>
DISTRIBUIDOR	4,51 m <sup>2</sup>
DORMITORIO	14,83 m <sup>2</sup>
BANO	5,23 m <sup>2</sup>
<b>SUP. ÚTIL TOTAL</b>	<b>60,41 m<sup>2</sup></b>



VIVIENDA D  
RÚA SAN SEBASTIÁN Nº 24-26, VIGO

60,41 m<sup>2</sup>  
E 1/50