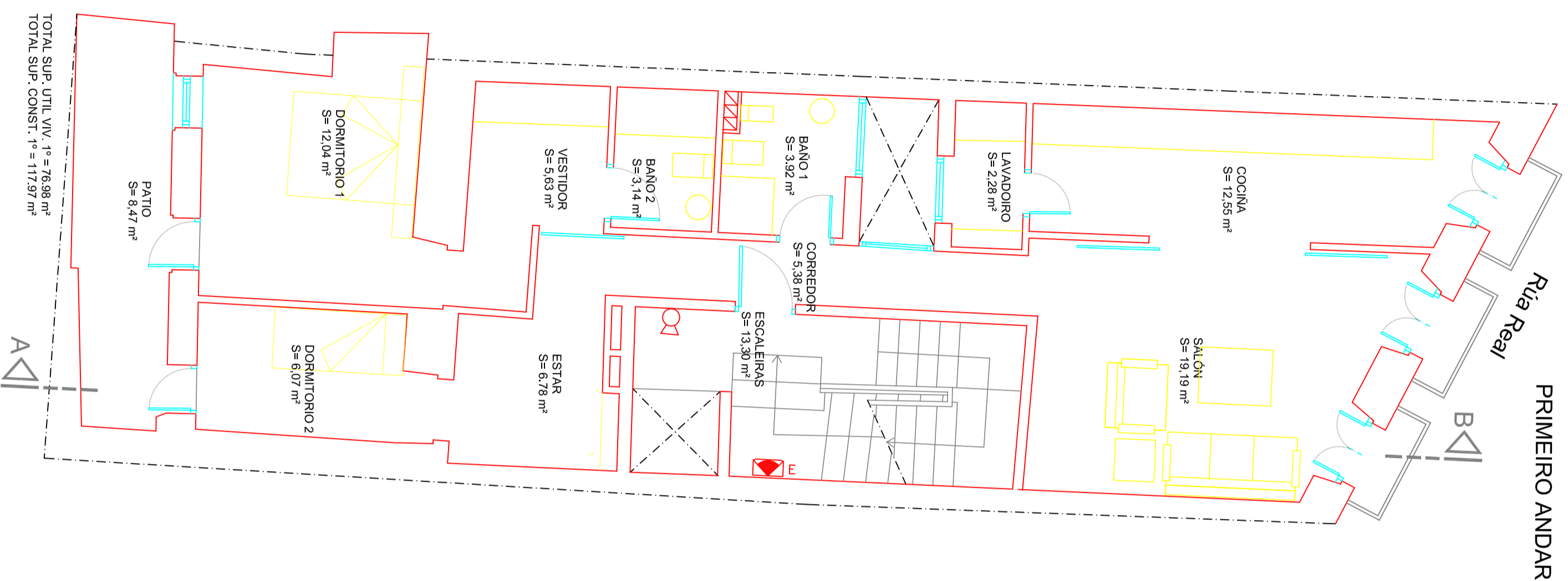
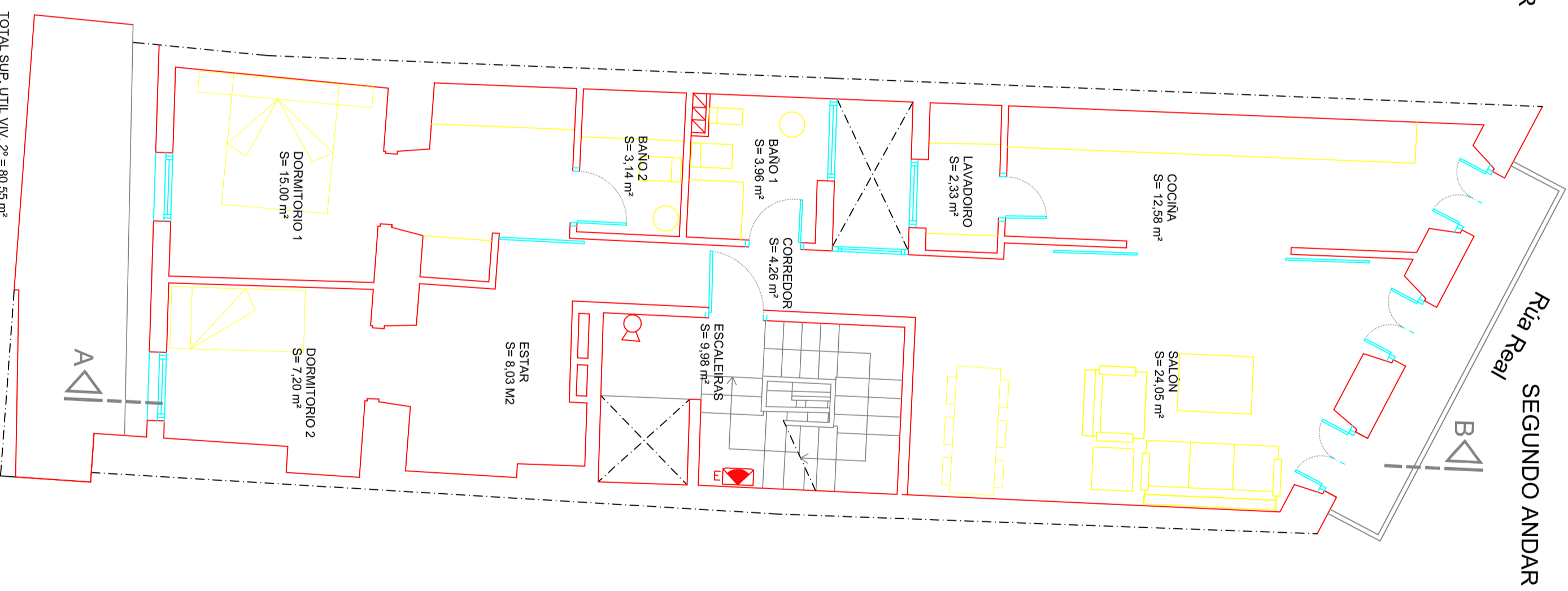


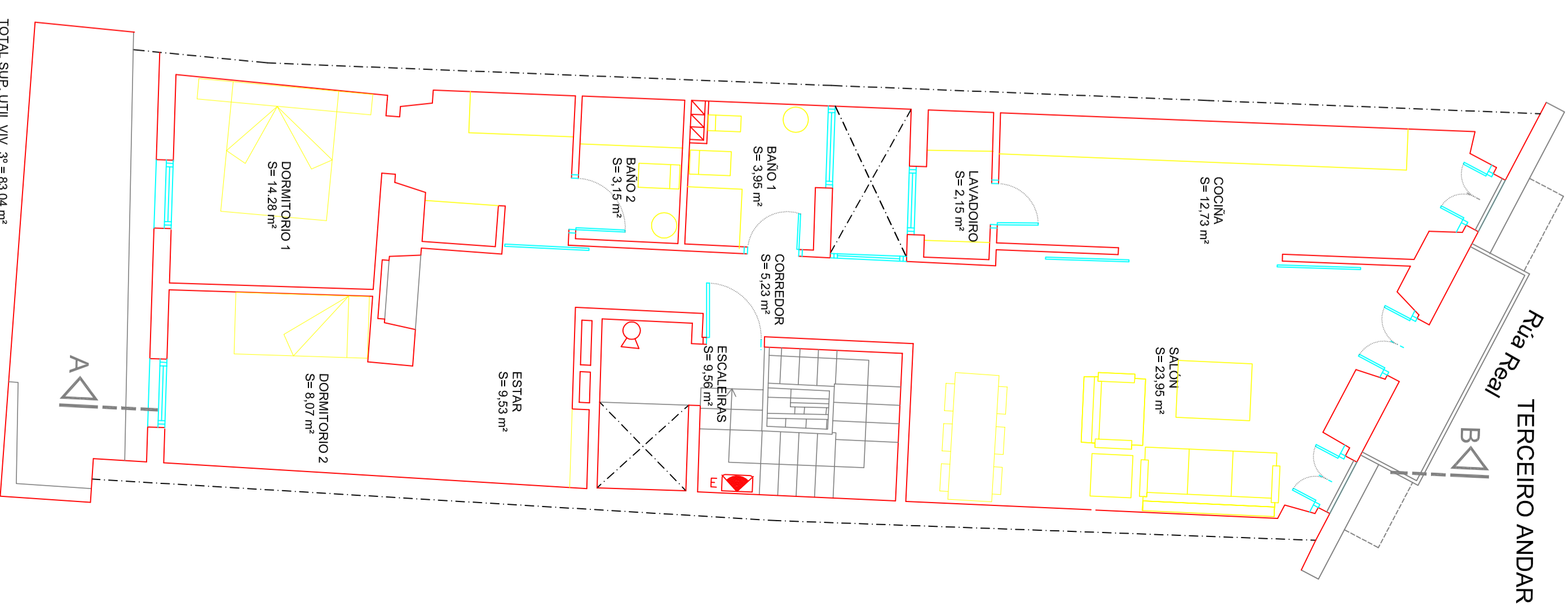
b
 TOTAL SUP. UTIL. PL. BAIXA = 95,76 m²
 TOTAL SUP. CONST. PL. BAIXA = 119,26 m²



TOTAL SUP. UTIL. VIV. 1º = 76,98 m²
 TOTAL SUP. CONST. 1º = 117,57 m²



TOTAL SUP. UTIL. VIV. 2º = 80,55 m²
 TOTAL SUP. CONST. 2º = 115,35 m²



TOTAL SUP. UTIL. VIV. 3º = 83,04 m²
 TOTAL SUP. CONST. 3º = 115,36 m²