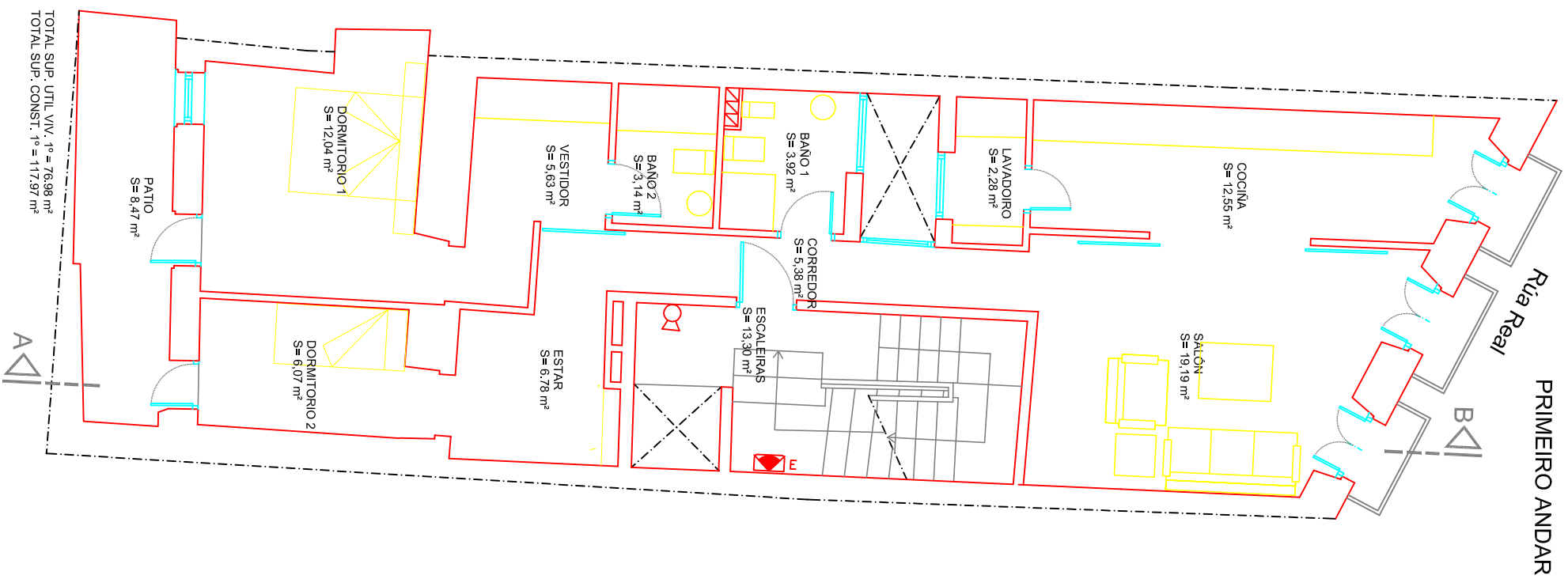


b

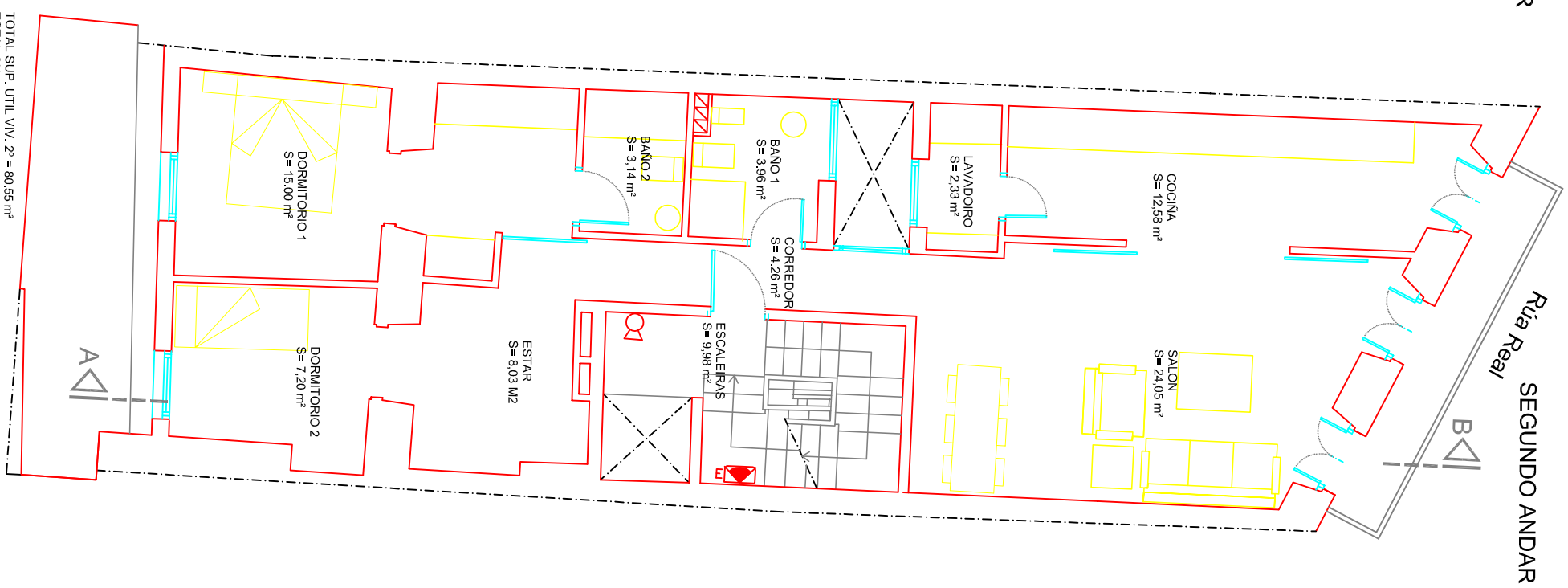
TOTAL SUP. UTIL. PL. BAIXA = 95,76 m<sup>2</sup>

TOTAL SUP. CONST. PL. BAIXA = 119,26 m<sup>2</sup>



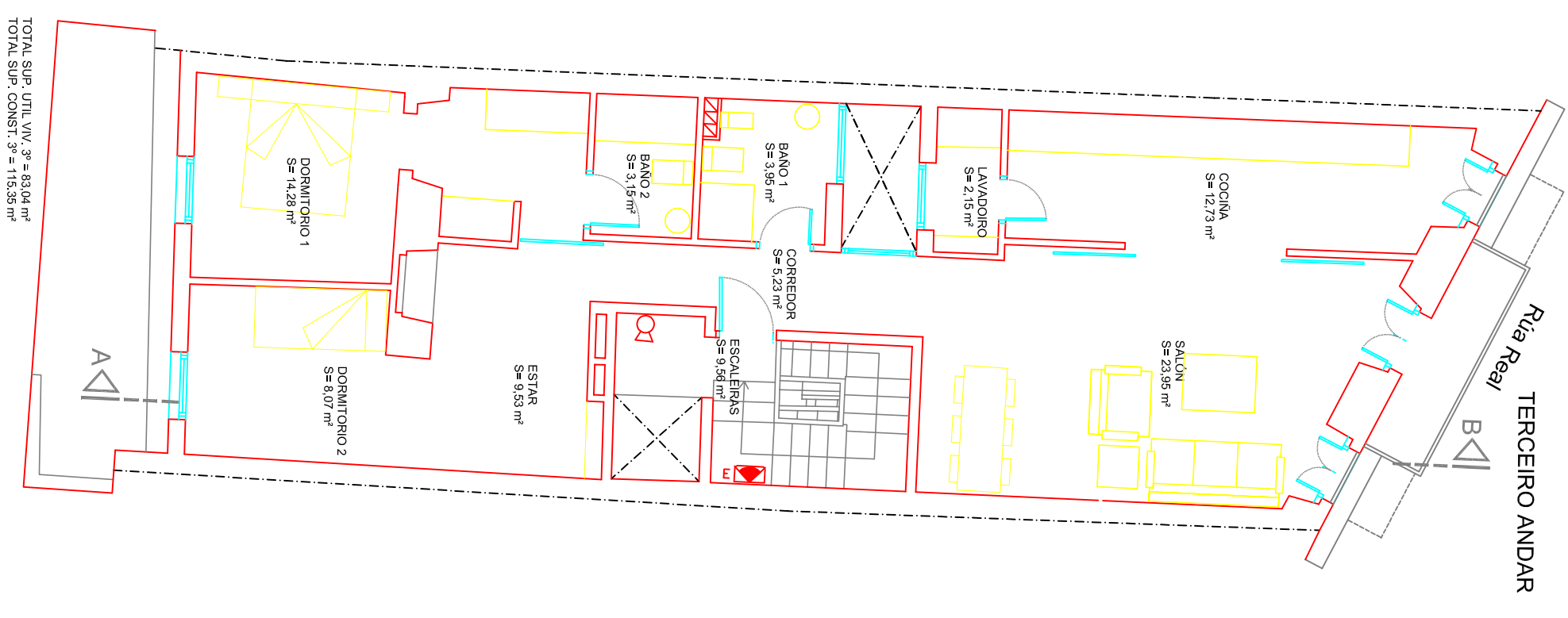
TOTAL SUP. UTIL. VIV. 1.º = 76,98 m<sup>2</sup>

TOTAL SUP. CONST. 1.º = 117,97 m<sup>2</sup>



TOTAL SUP. UTIL. VIV. 2.º = 80,56 m<sup>2</sup>

TOTAL SUP. CONST. 2.º = 115,36 m<sup>2</sup>



TOTAL SUP. UTIL. VIV. 3.º = 83,04 m<sup>2</sup>

TOTAL SUP. CONST. 3.º = 115,35 m<sup>2</sup>