

SUBIDA AO CASTELO 9

Número de vivendas: 2

Proxecto: Pablo Menéndez (MAM Arquitectura)

Adxudicación:

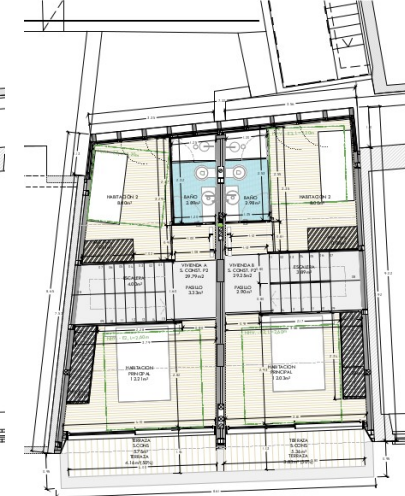
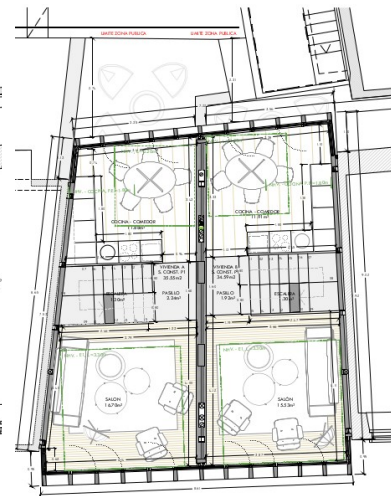
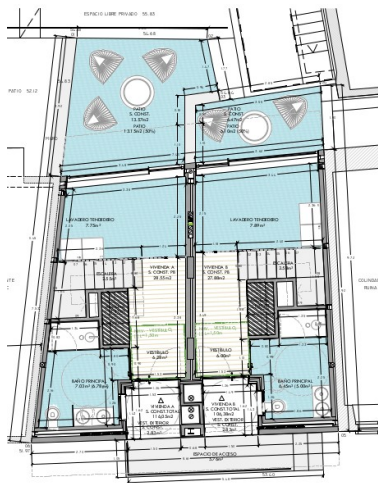
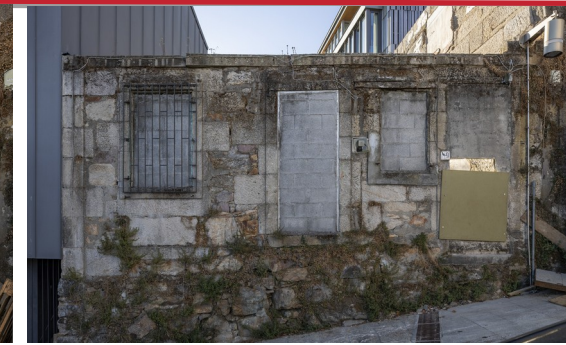
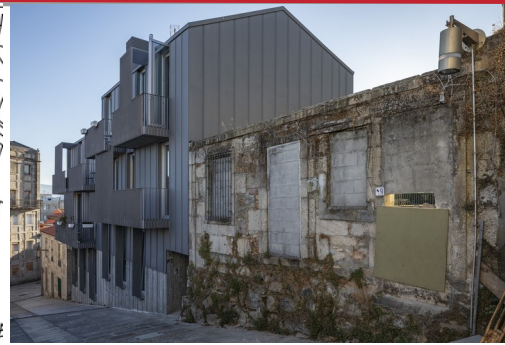
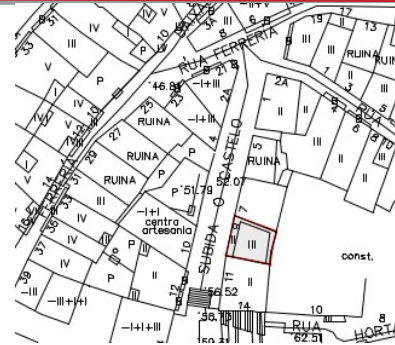
Superficie const. Total: 222,43 m²

Vivenda A:

2D + S.C + C + 2B + LT / T / 94,78 m² útiles

Vivenda B:

- 2D + S.C + C + 2B + LT / T / 91,72 m² útiles



REHABILITACIÓN DO CASCO VELLO